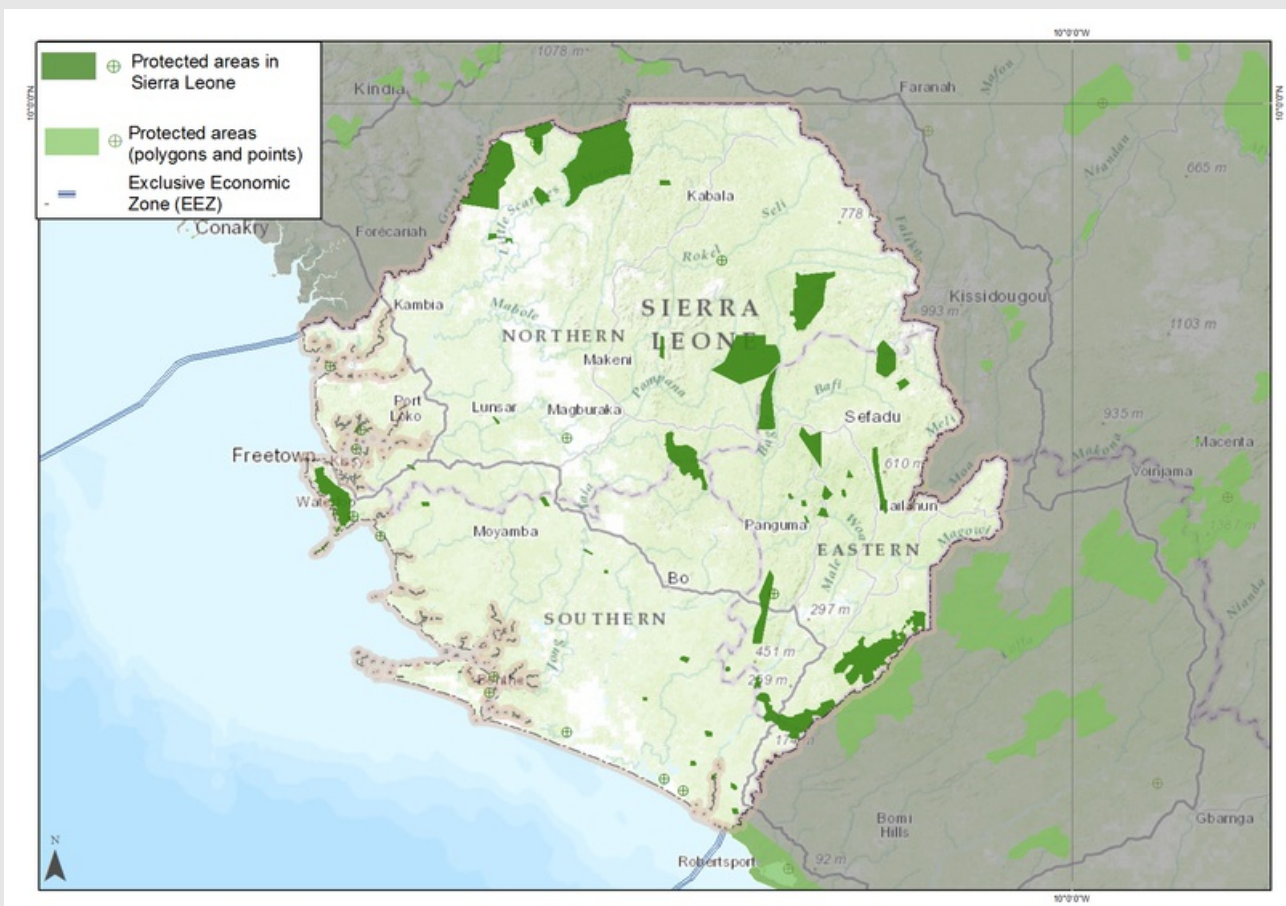


# Sierra Leone



## DEFINITION



---

## PROTECTED AREAS

---

| <b>Protected areas designated under international conventions and agreements</b> |   |
|--|---|
| <a href="#">World Heritage sites</a>   |   |
| Natural  |   |
| Cultural   |   |
| Mixed  |   |
| <a href="#">Ramsar sites (Wetlands of International Importance)</a>              | ✓ |
| <a href="#">Man and the Biosphere Reserves</a>                                   |   |
| <b>National-level protected areas</b>  |   |
| <a href="#">IUCN Protected Area Management Categories</a>                        | ✓ |
| <a href="#">Ia</a>   |   |
| <a href="#">Ib</a>   |   |
| <a href="#">II</a>   | ✓ |
| <a href="#">III</a>  |   |
| <a href="#">IV</a>   | ✓ |
| <a href="#">V</a>  |   |
| <a href="#">VI</a>   | ✓ |
| Not Assigned or Not Reported   | ✓ |

---

## BIODIVERSITY DESIGNATIONS

---

Biodiversity designations represent the sites or regions that have been identified as important for biodiversity conservation due to their biological uniqueness or the high threat that they face. A plethora of different approaches have been promoted by conservation organisations and researchers in order to guide decisions about where to invest in biodiversity

conservation. These approaches use globally consistent criteria and available data in order to identify and classify sites. The designations themselves do not confer protected area status, but many of the sites identified may partly or fully overlap with a protected area designation on-ground.

|  |   |
|--|---|
| <a href="#">Key Biodiversity Areas</a>             | ✓ |
| <a href="#">Alliance for Zero Extinction Sites</a> |   |
| <a href="#">Crisis Ecoregions</a>                  | ✓ |
| <a href="#">Centres of Plant Diversity</a>         |   |
| <a href="#">Endemic Bird Areas</a>                 | ✓ |
| <a href="#">Global 200 Ecoregions</a>              | ✓ |
| <a href="#">High Biodiversity Wilderness Areas</a> |   |
| <a href="#">Intact Forest Landscapes</a>           |   |
| <a href="#">Last of the Wild</a>                   |   |

## CONVENTIONS AND TREATIES

---

Important conventions and multi-lateral agreements that relate to biodiversity and the environment.

|   |                   |
|---|-------------------|
| <a href="#">Convention on Biological Diversity (CBD)</a>  | Accession         |
| <a href="#">Convention on International Trade in Endangered Species of Wild Fauna and Flora (CITES)</a> | Accession         |
| <a href="#">Convention on the Conservation of Migratory Species of Wild Animals (CMS)</a>               |                   |
| <a href="#">International Convention for the Regulation of Whaling (ICRW)</a>                           |                   |
| <a href="#">International Plant Protection Convention (IPPC)</a>  | Contracting party |
| <a href="#">International Convention for the Prevention of Pollution from Ships</a>                     | I-II; III; IV; V; |

|   |                  |
|---|------------------|
| <a href="#">(MARPOL Convention)</a>   | VI               |
| <a href="#">International Treaty on Plant Genetic Resources for Food and Agriculture (Plant Treaty)</a> | Accession        |
| <a href="#">Convention on Wetlands of International Importance (Ramsar Convention)</a>                  | Entry into force |
| <a href="#">United Nations Convention on the Law of the Sea (UNCLOS)</a>                                | Ratification     |
| Chapter XXI 3. Convention on Fishing and Conservation of the Living Resources of the High Seas          | Succession       |
| <a href="#">World Heritage Convention</a>   | Ratification     |
| <a href="#">Antarctic Treaty</a>  |                  |


#### OTHER MEMBERSHIP

---

|                                     |        |
|-------------------------------------|--------|
| Arctic Council                      |        |
| International Maritime Organisation | Member |
| IPBES                               |        |
| IPCC                                | Member |
| OECD                                |        |

#### REFERENCES & WEBSITE

---

|   |
|---|
| <p></p> <p>Links</p> <p><a href="#">InforMEA Sierra Leone country page</a></p> |
|---|

